

Massachusetts Emergency Management Agency

The Bigger Picture: Emergency Response at the State Level



MEMA

Mike Main, MA Emergency Management Agency
Region 1 Manager

January 17th, 2018

Agenda

- Background
- Comprehensive Emergency Management Plan
- Statewide Coordination
- EMAC
- Recent Examples
- Federal Support



MEMA

MEMA Mission Statement

- MEMA is the state agency charged with ensuring the state is prepared to withstand, respond to, and recover from all types of emergencies and disasters, including natural hazards, accidents, deliberate attacks, and technological and infrastructure failures.
- MEMA's staff of professional planners, communications specialists and operations and support personnel is committed to an all hazards approach to emergency management.



MEMA

Mission Statement Cont.

- By building and sustaining effective partnerships with federal, state and local government agencies, and with the private sector - - individuals, families, non-profits and businesses - -
- MEMA ensures the Commonwealth's ability to rapidly recover from large and small disasters by assessing and mitigating threats and hazards, enhancing preparedness, ensuring effective response, and strengthening our capacity to rebuild and recover.



MEMA

MEMA's Day to Day Activities

- Ensures local/state all hazards plans are written and maintained
- Provides all hazards training
- Monitors “events” statewide
- Acts as the State Warning Point



MEMA

Comprehensive Emergency Management Plan

- Describes the system that will be used by the Commonwealth of Massachusetts to prevent, prepare for, respond to, and recover from an emergency or disaster.
- Identifies and assigns specific areas of responsibility for coordinating resources to support the Commonwealth's response to an emergency or disaster.
- Is an all hazards plan, developed to address the Commonwealth's unique natural and human-caused hazards.



MEMA

Natural Hazards



Copyright Ian Wittmeyer



- Flood
- Winter Storm
- Tornado/Severe Thunderstorm
- Drought
- Hurricane/Coastal Storm
- Forrest Fire
- Earthquake
- Windstorm
- Pandemic

Technological Hazards



- Hazardous Materials
- Nuclear Power Accident
- Utility Emergency
- Terrorism
- Dam Failure
- Water Supply Problems
- Major Transportation Accident
- Search and Rescue

Statewide Coordination

- Emergency Support Request
- Local, Regional, State, Federal, Private Sector, NGO's
- State Emergency Operations Center (SEOC) “The Bunkah”
- Emergency Support Functions (ESF's)



MEMA

Response Considerations

- Disasters begin and end locally
- Size and scope of the disaster will affect available resources
- Scarce Critical Resource prioritization
- Plan for 72-96 hours self sustainment



Emergency Support Request

Disaster Affects Local Communities



Local Response

Local Resources
Volunteers
Mutual Aid
Emergency Contracts

Request for State Assistance

State Response

State Agencies
Private Organizations
Non-Impacted Local Resources
Other States

Request for Federal Assistance

Federal Response

Federal Agencies
Private Organizations
Non-Impacted States
Volunteers



MEMA

Regional Emergency Operations Centers

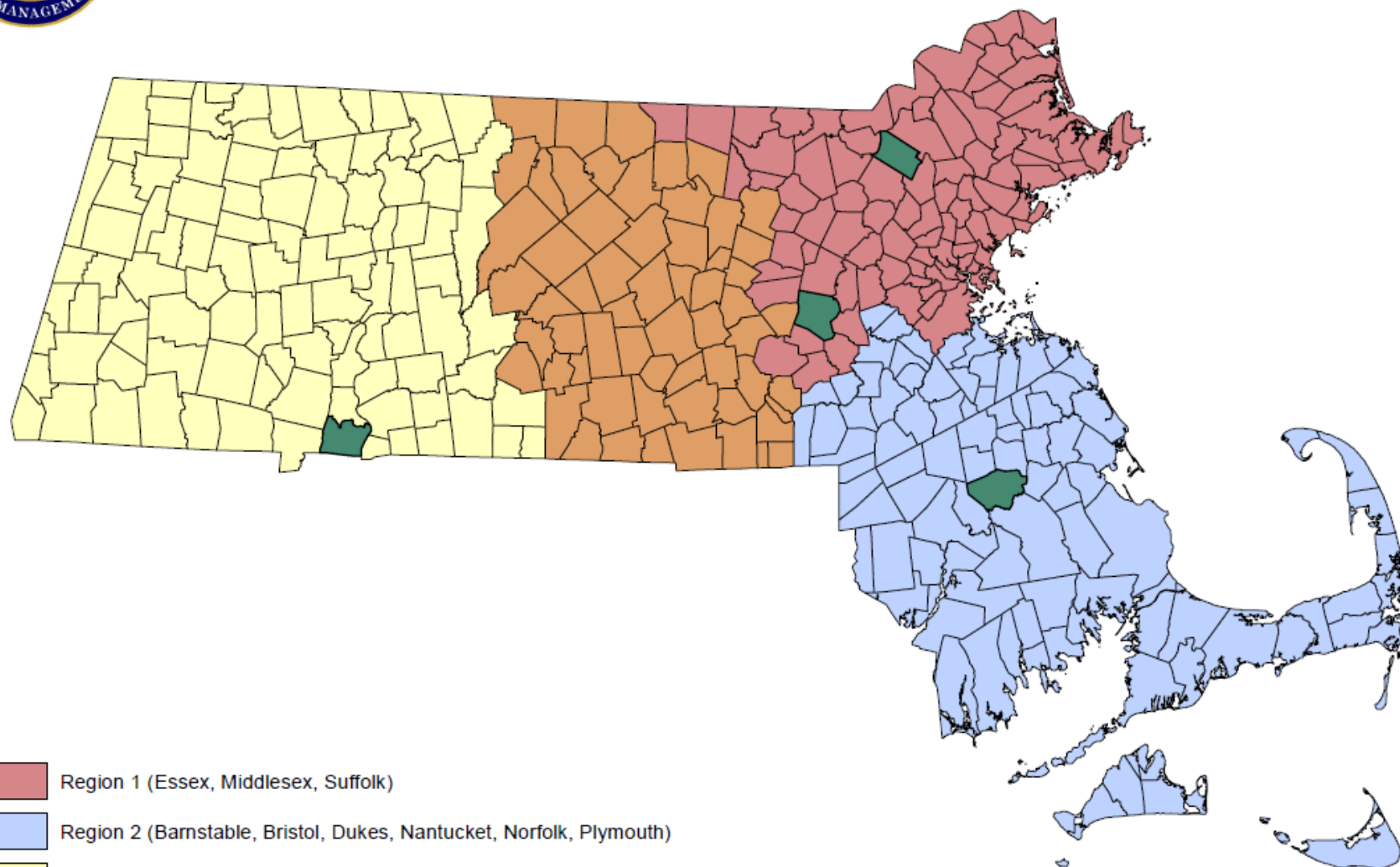
- MEMA has three regional emergency operations centers (REOC) that can be activated to support an incident
- REOCs serve as the primary point of contact for impacted communities and local emergency operations centers, and support the components of emergency response associated with their respective regions
- REOCs obtain and provide situational awareness and information on local emergency operations to the SEOC

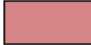






MEMA



MEMA Regions



-  Region 1 (Essex, Middlesex, Suffolk)
-  Region 2 (Barnstable, Bristol, Dukes, Nantucket, Norfolk, Plymouth)
-  Region 3 (Berkshire, Franklin, Hampden, Hampshire)
-  Region 4 (Worcester)
-  **MEMA Offices**

State Emergency Operations Center

- SEOC serves as the central point of coordination for state-level emergency management and response activities
- The SEOC may be activated to coordinate state-level response to an emergency or in response to a large-scale planned event where state resources must be mobilized to ensure health and safety
- The SEOC coordinates with the Governor's Office, FEMA Region 1, and the Regional EOCs



MEMA

SEOC in Action



Emergency Support Functions

Massachusetts Emergency Support Functions (ESFs)

ESF-1	Transportation
ESF-2	Communications
ESF-3	Public Works and Engineering
ESF-4	Fire Fighting
ESF-5	Business and Industry
ESF-6	Mass Care, Emergency Housing, Human Services
ESF-7	Volunteers and Donations
ESF-8	Public Health and Medical Services
ESF-9	Search and Rescue
ESF-10	Hazardous Materials and Environmental Protection
ESF-11	Agriculture, Animals and Natural Resources
ESF-12	Energy
ESF-13	Public Safety & Security
ESF-14	Recovery
ESF-15	Public Information and External Affairs
ESF-16	Military Support



MEMA



Moving Massachusetts Forward.
massDOT

Emergency Management Assistance Compact

The Emergency Management Assistance Compact (EMAC), is a State-to-State mutual aid compact that facilitates the sharing of services, personnel and equipment across state lines during times of disaster and emergency.

MGL CHAPTER 339, The Acts of 2000

Includes all 50 States and 5 US Territories



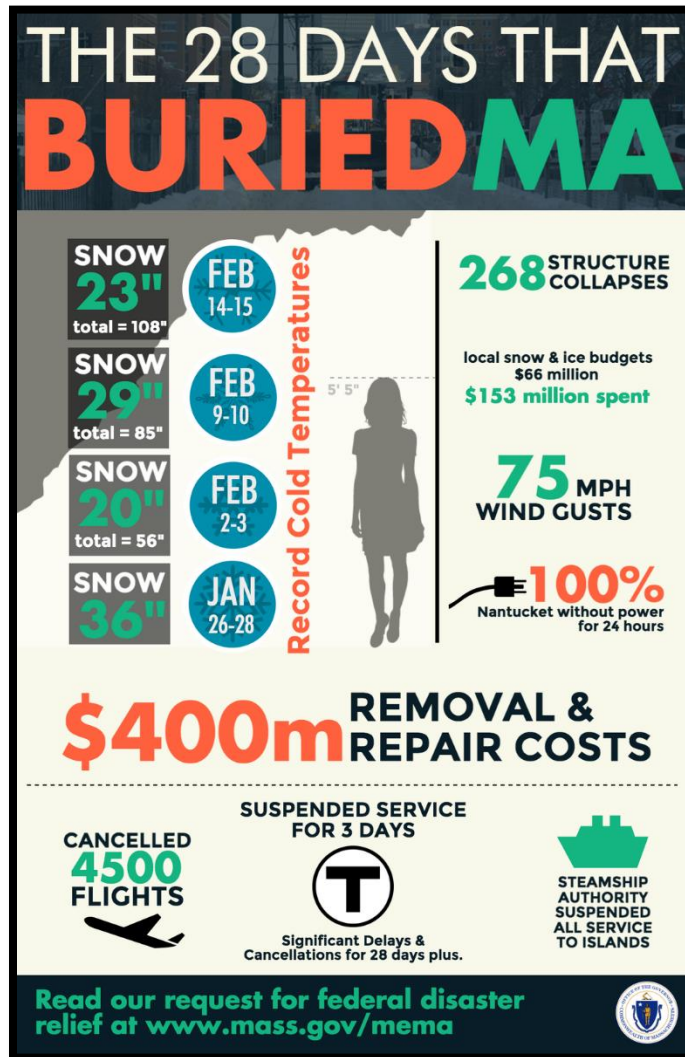
MEMA

Puerto Rico 2017: Hurricane Maria and Irma

- 120+ EMAC Requests and Responses
- MA sent Law Enforcement, National Guard, Incident Management Teams, Hospital Staff, Recovery Specialists



February 2015: Winter Storm Nemo



Federal Support

- FEMA- Federal Coordinating Officer (FCO) embedded for major events at Headquarters
- RRCC/NRCC- Regional Response Coordination Center (Maynard, MA) /National (D.C.)
- For some events, able to pre-stage Federal resources in designated areas
- FEMA has a similar ESF structure and can draw on Federal agencies as needed
- Will set up a Joint Field Office (JFO) if disaster is declared to coordinate response

Thank You...

Mike Main

Region 1 Manager

Massachusetts Emergency Management Agency

Mikael.Main@state.ma.us

978-328-1500

“NOT IF, BUT WHEN”



MEMA